



RAYNHAM



HALL FARM BARN

EAST RAYNHAM

A rare opportunity has arisen to occupy a unique premises in East Raynham.

Hall Farm Barn dates from the early 19th Century The premises were originally ancillary barns for the adjacent estate Farmhouse and offers 2,970 sq. ft. of space.

The barn is currently split into three spaces, but could be opened out further, with the option to expand into additional barns at the rear.

The current layout comprises of.

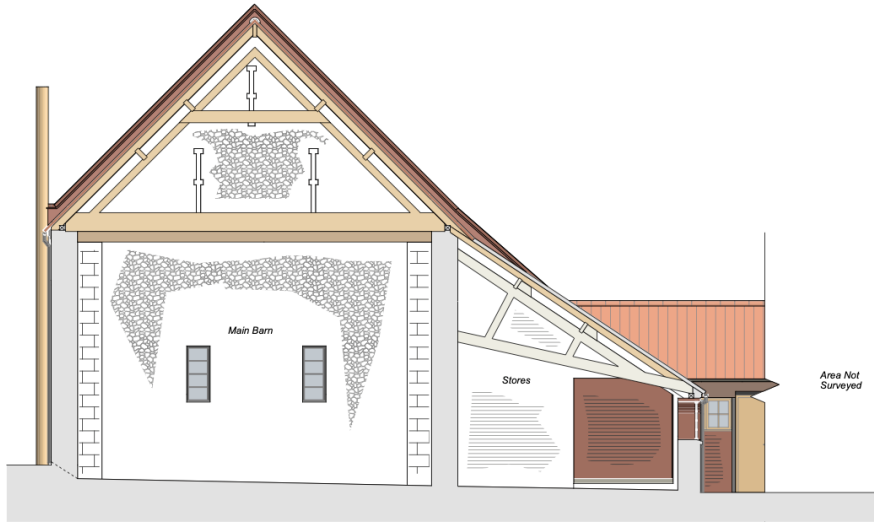
- 1,883 sq. ft.
- 495 sq. ft.
- 602 sq. ft.

The grade II barn features secure metal doors to the front of the property and a rear loading space to the rear. Large vehicles and machinery have good access to the unit in its rural, yet accessible position.

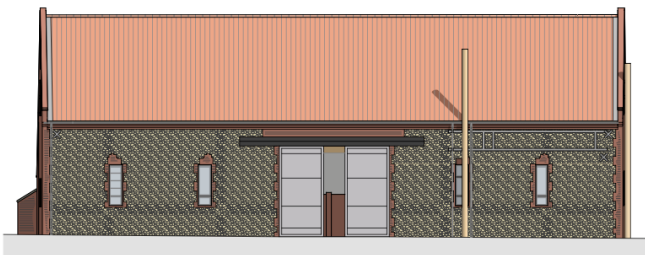
The barn is suitable for a number of uses, subject to obtaining the necessary planning consents, but would ideally suit a distillery / brewery. There is also the opportunity to work with the estate to grow grain specifically for use.

Viewing is strictly by appointment only. To arrange an appointment to view, contact the estate office on 01328 863746 or via abbie@raynham.co.uk

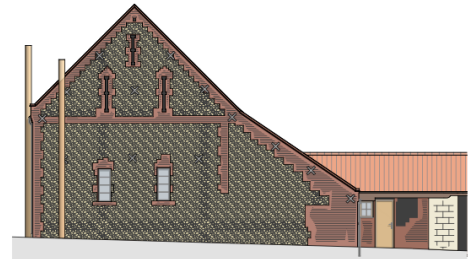




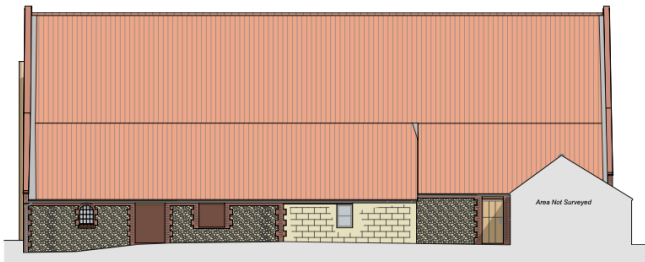
CHA Section A-A
1:50



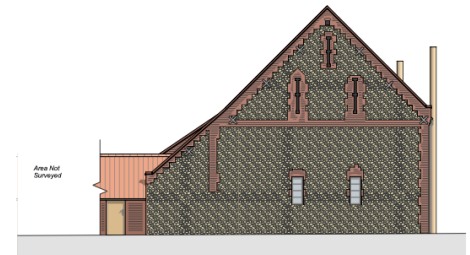
CHA West Elevation
1:100



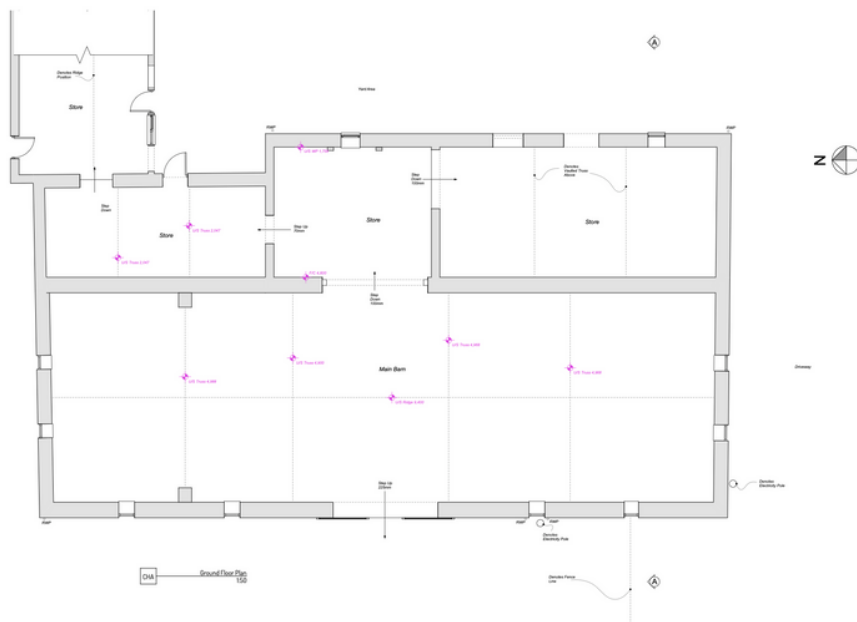
CHA South Elevation
1:100



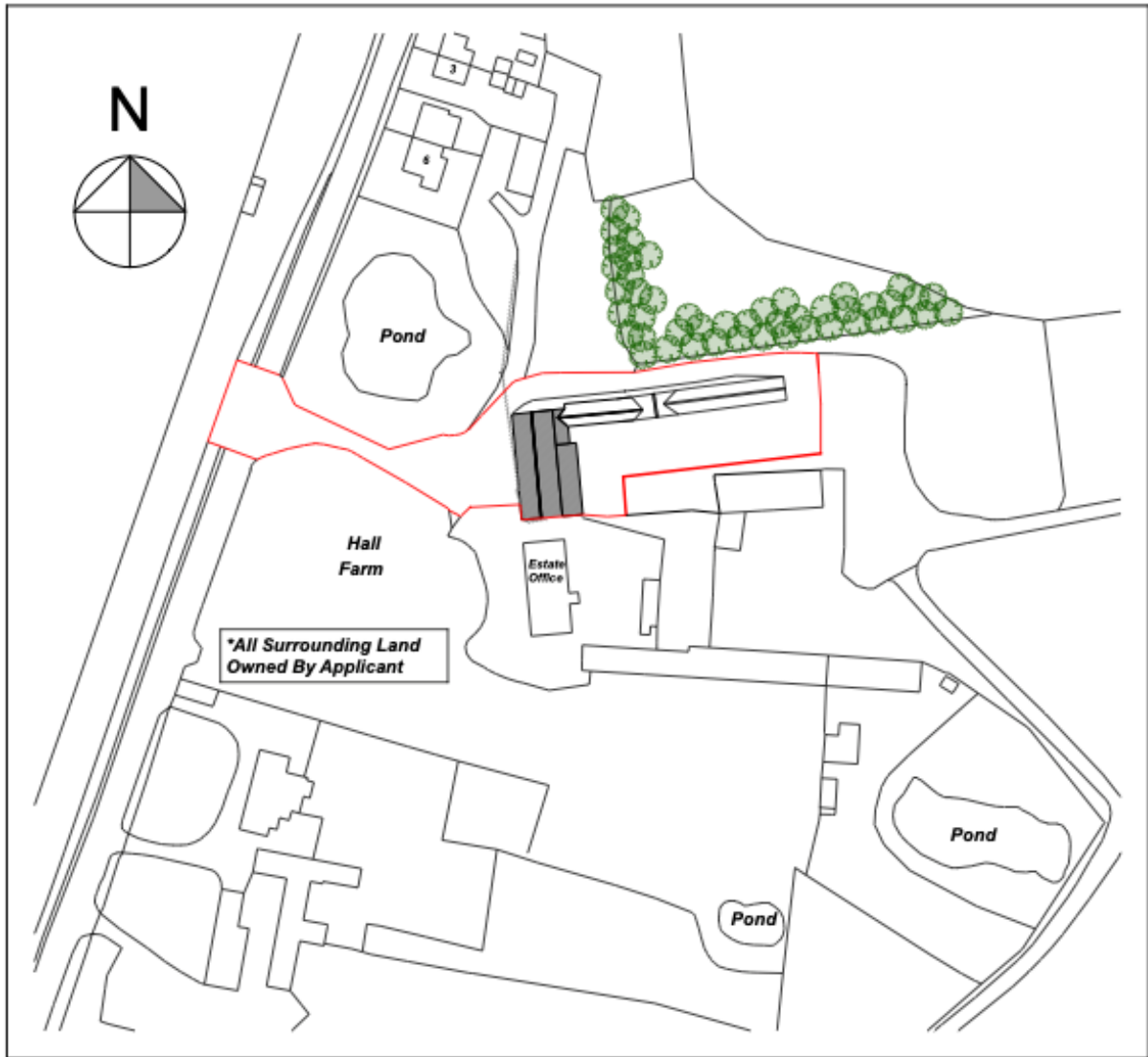
CHA East Elevation
1:100



CHA North Elevation
1:100



CHA Ground Floor Plan
1:50



CHA

Site Plan
1:1250

Raynham Farm gives notice that:

- a) The particulars are set out as a general outline only for the guidance of intending purchasers or lessees and do not constitute, nor constitute a part of, an offer or a contract;
- b) All descriptions, dimensions, reference to condition and necessary permissions for use and occupation, and other details are given without responsibility and any intending purchasers or tenants should not rely on them as statements or representations of fact but must satisfy themselves by inspection or otherwise as to the correctness of each of them.